



How To Measure for Custom-Cut Cushions (Page 1 of 2)

Foam Factory has made ordering brand-new, custom cushions easier than it has ever been. All we need are measurements, and we can cut, pack, and deliver custom-made cushions right to your door!

This quick How-To will explain the best way to record measurements to give you the perfect new cushion!

STEP 1: Remove the old foam cushion from its cover. This is the single most important step in measuring, as you will actually measure the *cover* of your cushion, shown in Picture 1, not the old insert. Foam loses resilience over time, essentially “shrinking.” As foam cells break down from wear, they increasingly lose the ability to rebound to their original dimensions. Measuring the cover means your new foam insert is sure to fill the cushion snugly and comfortably.

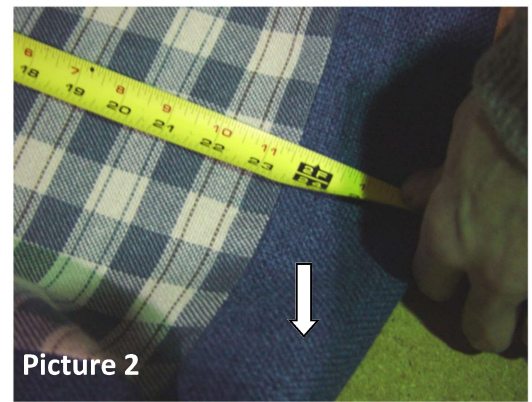
STEP 2: Sketch the shape of your cushion on a sheet of paper. Instead of recording a list of dimensions, match each one to the corresponding cushion section. This ensures you don’t accidentally swap values while entering them online. This is particularly important on non-rectangular cushions that have many measurement values (Picture 3 being an example).

STEP 3: Placing the empty cover on a flat surface, measure each span of the cushion seam-to-seam, including cushion thickness/height. Picture 2 shows an example of a seam measurement. On square or rectangular cushions, you’ll take three measurements. L- and T-Cushions will require additional measurements, as shown in Picture 3. (Again, when measuring, be sure the cover is empty.) Another tip is to always measure across the body of a cover, as tight stitching can make corners smaller than the cushion’s true dimensions.

STEP 4: (See next page for Step 4)



Picture 1



Picture 2



Picture 3



How To Measure for Custom-Cut Cushions (Page 2 of 2)

STEP 4: Measuring Your Cushions: Adjusting Your Measurements

Once you have your measurements, adjust your measurements depending on if you are ordering a foam-only cushion, or a cushion with Dacron wrap.

For Foam Only Cushions:

- 1) Add 1/2" to the width and length.
- 2) Round the thickness up or down depending on how far above a whole number it is.
 - A. If the thickness is less than 1/4" above the whole number (Example 5-1/8") round the thickness down (Example 5-1/8" down to 5").
 - B. If the thickness is 1/4" or more above the whole number (Example 5-1/4" round the thickness up (Example 5-1/4" up to 6").
 - C. If the thickness is exactly a whole number (Example 5"), no rounding is needed.

For Cushions With Dacron Wrap

- 1) Round the thickness up or down depending on how far above a whole number it is.
 - A. If the thickness is less than 1/4" above the whole number (Example 5-1/8") round the thickness down (Example 5-1/8" down to 5").
 - B. If the thickness is 1/4" or more above the whole number (Example 5-1/4" round the thickness up (Example 5-1/4" up to 6").
 - C. If the thickness is exactly a whole number (Example 5") no rounding is needed.